

OSF HEALTHCARE SAINT ANTHONY MEDICAL CENTER

2021

Patricia D. Pepe Center for Cancer Care ANNUAL REPORT



OSF[®]
HEALTHCARE



Strength, courage and love

IFTEKHAR AHMAD, MD, MS

THELMA BAKER, MSN, RN, OCN, NEA-BC

Dear members of our community,

It is our great pleasure to present the 2021 annual report for the Patricia D. Pepe Center for Cancer Care at OSF HealthCare Saint Anthony Medical Center. We continue striving to improve the quality of care for the patients and families who are impacted by cancer in our community during the COVID-19 pandemic. We have found new ways to provide care and connect with the community we serve while keeping our patients' safety in the forefront of all we do.

Cancer screenings have been negatively impacted due to COVID-19 in our community. This trend was noted throughout the entire nation. Cancer screenings dropped by 25-30%. As a result of delayed cancer screenings patients are now being diagnosed at later stages of cancer than prior to the pandemic. People diagnosed earlier are not only more likely to survive cancer, but are also likely to have better experiences of care, lower treatment morbidity and improved quality of life compared with those diagnosed late.

Knowing the importance of cancer screening, all OSF cancer programs participated in a marketing campaign to promote the return to cancer screenings from January – April, 2021. The Centers for Disease Control and Prevention (CDC) follows the U.S. Preventive Task Force guidelines in screening for breast, lung, colon and cervical cancer. Please talk with your primary care provider if you have questions regarding screening for cancer.

Our cancer program offers radiation oncology, medical oncology, infusion services, cancer research, high risk cancer genetics, survivorship, navigation and more services. We are the only facility triple accredited in the Rockford community in all aspects of cancer care. We have been accredited in overall cancer care through the American College of Surgeon's Commission on Cancer since 1942 and accredited for chemotherapy through the American Society of Clinical Oncology's (ASCO) Quality Oncology Practice Initiative accreditation program since 2012. Most recently our Radiation Department achieved their

first accreditation through the American College of Radiology's Radiation Oncology Practice Accreditation (ROPA) in 2020. The ROPA program provides radiation oncologists with, impartial peer review and evaluation of patient care. Facility staff, equipment, treatment-planning and treatment records, as well as patient-safety policies and quality control/quality assessment activities, are assessed. We believe that accreditation helps us drive and achieve quality in the care we provide our patients.

Despite challenges we have enjoyed a lot of successes, including the installation of an upgraded second Truebeam to provide the latest technology and safety in radiation therapy to our patients. We have also added providers to our team, including a new medical oncologist and an experienced physician assistant. We have increased our clinic hours at OSF HealthCare Saint Elizabeth Medical Center in Mendota, expanded our high-risk cancer genetics program to include a monthly clinic day at OSF Saint Elizabeth, and we provided telehealth visits for genetics.

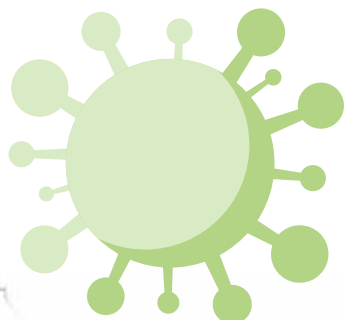
In the spirit of Christ, our Mission is to serve cancer patients and our community with the greatest care and love. Our patients and their loved ones continually demonstrate to us strength and courage. They are the reason we strive to provide the highest quality care, and we thank everyone who helps make our achievements possible.

Sincerely,

Iftekhar Ahmad, MD, MS
Cancer Committee Chairman

Thelma Baker, MSN, RN,
OCN, NEA-BC
Director of Oncology Services

Cancer doesn't stop for COVID-19. Neither do we!



While there have been unique challenges over the past year, the Patricia D. Pepe Center for Cancer Care has continued to provide high quality and safe care to all of our patients. The COVID-19 pandemic has caused undue stress to everyone, especially those who were already receiving treatment for cancer.

We offered telephone and telehealth visits when appropriate. All clinics and treatment areas took extra steps to keep infected or potentially infected patients separate from those who were at risk. And our providers and nurses worked together to ensure that all patients' remained on track and their risks for contracting COVID-19 were minimized.



Commission on Cancer reaccreditation

Commission on Cancer (CoC) accreditation provides real value to accredited programs. Programs can proudly demonstrate that they have invested in resources to ensure that cancer patients receive high quality, coordinated care.

STRENGTHS OF OUR PROGRAM, ACCORDING TO THE COC:



COMMUNITY OUTREACH

We go into the community for multiple events and don't make the community come to us, raising awareness of the need for prevention and screening.

CLINICAL TRIALS

We provide access to multiple clinical trials through our affiliation with the University of Illinois College of Medicine.

CANCER GENETICS

We provide genetic assessment for a large number of patients who have cancer or a family history of cancer.

NURSING CERTIFICATION

More than 75% of the nurses on our outpatient care team are board certified, helping us deliver the most expert care.

ONGOING EDUCATION

Health care is always evolving and improving, which is why our team makes it a priority to keep learning and staying up to date with the latest in cancer care.

Clinical trials for cancer patients

KAREN BLATTER, RN, BSN, OCN – CLINICAL RESEARCH COORDINATOR



Through clinical trials, the Patricia D. Pepe Center for Cancer Care provides patients more treatment options. The cancer center currently has 12 clinical trials open for new patient enrollment. These trials include new treatments for breast, colon and lung cancers and new ways to prevent and manage side effects of chemotherapy, such as nausea.

There are also non-intervention studies that examine blood and tissue samples in hopes of developing new targeted therapies. These clinical trials are sponsored by the National Cancer Institute, pharmaceutical partners and scientists looking for better ways to diagnose and treat cancer.

The research team screens all patients who come to the cancer center to determine if they qualify for participation in a clinical trial. The team uses the data to analyze features and commonalities among cancers and pursue trials that fit the needs of our patients.

It is our goal to offer a wide variety of clinical trials so as many patients as possible are able to participate in research. Patients can obtain information about clinical trials from their treating oncologist and surgeon, their nurse navigator, the research team, education brochures and the OSF website.

STUDIES OPEN TO ACCRUAL

Treatment Trials	(12)
Breast	4
Colon	2
Lung	5
Symptom Management	1
Supportive Care Trials	(1)
Cancer-Specific Biorepositories	(4)
Lung	2
Prostate	1
Solid Tumors	1
TOTAL	17

osfsaintanthony.org/cancer-research



High risk cancer genetics

PEGGY ROGERS, MSN, APRN, AOCNP, AND AMY SKAGGS, MS

The year 2021 presented opportunities for the High Risk Genetics Program. With the Ministrywide rollout of telehealth and video appointments due to COVID-19, the program was able to serve patients from around the region during the pandemic and reach patients who otherwise may have declined an appointment due to the distance to the office. In July of 2021 we expanded our genetics to OSF HealthCare Saint Paul Medical Center in Mendota and now offer on-site visits there.

The High Risk Genetics Program completed its fourth year utilizing a tracking tool called CancerIQ, which is used for all patients referred to the Genetics Department. The High Risk Genetics Program was also implemented in the Women's Center to offer patients a genetic screening at the time of their annual mammogram. Utilizing the CancerIQ program,

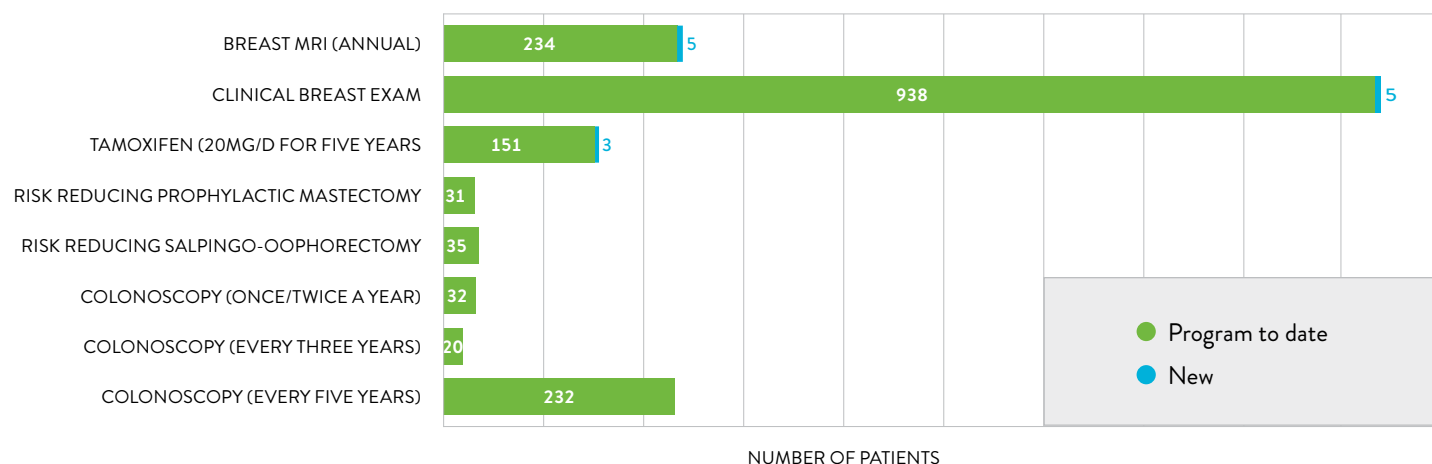


patients are then contacted to schedule a genetic risk assessment appointment and undergo genetic counseling and testing, if appropriate. The patient then receives an individualized plan of care with recommendations for heightened surveillance or general screening

guidelines and healthy lifestyle recommendations. The above table shows the number of recommended changes in medical management from 2017-2021.

RECOMMENDED CHANGES IN MEDICAL MANAGEMENT

BREAKDOWN OF MEDICAL MANAGEMENT CHANGES RECOMMENDED





Oncology nurse navigation

LISA BRUNO, RN, BSN, OCN
PEGGY MALONE, RN, BS, OCN

A diagnosis of cancer can be overwhelming. That is why we strive to provide all patients with a navigator to answer their questions and guide them every step of the way through treatment and into recovery.

An oncology nurse navigator is clinically trained nurse who is responsible for identifying and addressing barriers to timely and appropriate cancer treatment. The navigator skillfully guides the patient through the cancer care continuum from diagnosis through survivorship

or end of life care. More specifically, and importantly, the navigator acts as a central point of contact for the patient. Patients take comfort in the fact that a navigator is readily available by phone or for a face-to-face meeting. The navigator can help coordinate all components of care, including surgery, medical oncology, radiation oncology, social workers, patient education, community support, as well as financial and insurance assistance.

Our nurse navigators have vast experience in oncology, including

specialized certification. The patient populations most navigated in 2021 were breast, lung, colon, prostate and head and neck. The navigators are also involved with cancer conferences, process improvement projects, networking with Ministrywide navigators and community outreach. While 2021 presented additional barriers to care within the medical community, these challenges reinforced how important it is to provide a connection for the patient and to individualize oncology care.

osfsaintanthony.org/cancer-navigators



Financial navigation

MARIA RODRIGUEZ – FINANCIAL NAVIGATOR

Financial obstacles can make it difficult for some people to get access to cancer care, clinical trials and support during cancer treatment. We believe no one should have to forego treatment based on a lack of financial resources. We welcomed Maria Rodriguez as a dedicated financial navigator to our program in 2020. Maria dedicates her time to providing financial resources to cancer patients. The benefits of having a financial advocate on staff include improving patient satisfaction and decreasing patient anxiety.

New state-of-the-art radiation machine

In March 2021, the Patricia D. Pepe Center for Cancer Care at OSF HealthCare Saint Anthony Medical Center treated its first patient using a new radiation treatment machine – after the blessing of this new equipment by our pastoral care team, of course. The Varian True Beam Linear Accelerator is one of the most advanced radiation machines on the market. Dr. Iftekhar Ahmad said that with this new technology, the hospital can offer breast cancer patients targeted techniques that will limit the dose of radiation entering other organs, in particular the heart.

“One of the biggest advantages of having this technology is being able to treat patients with more precise radiation than before,” Dr. Ahmad said. “In addition, the patient’s treatment time on the table is reduced. They are monitored continually during their treatment, and if there are any sudden movements or changes in breathing, the radiation treatment will stop until it gets back in the normal range.”



Community outreach

OSF HEALTHCARE SAINT ANTHONY MEDICAL CENTER

Community outreach events have been very limited in light of the COVID-19 pandemic. As safety has allowed, the cancer center has participated in events to provide education on cancer prevention and screenings. We partner with many organizations in the surrounding area to educate our community on cancer risk, prevention and screening. This is an important part of any cancer program.



Commission on Cancer return to screening project

In the initial phases of the COVID-19 pandemic, routine health care such as cancer screenings were placed on hold due to the greater risk of contracting COVID-19. By end of calendar year 2020, a significant decrease in all cancer screening was found across the nation, and by the spring of 2021 an additional trend was identified: patients resuming cancer screening were being diagnosed at later stages of cancer as a result of the delays in screening. Our Cancer Committee members were made aware of an opportunity to participate in an Elective Quality Improvement Project and Clinical Study Open to All CoC/ NAPBC Sites from the Commission on Cancer (CoC). We had already initiated a marketing campaign to re-ignite cancer screening and the committee members approved participation in the CoC project. Lung cancer screening was chosen as our area of focus for this project due to the high prevalence of lung cancer in Winnebago County, which has remained as one of the top two cancers diagnosed throughout the state of Illinois annually for many years. Our goal was to improve low-dose lung cancer screening by 10% throughout the year. All OSF cancer programs participated in this marketing campaign from January-April that focused on the importance of resuming cancer

screenings. In addition, education was offered at all events that we attended within the community throughout the year. An group made up of leaders throughout OSF worked on new tools within our documentation system to help primary care providers educate and offer lung cancer screenings to patients who qualified for screening.

The National Comprehensive Cancer Network (NCCN) and Centers for Medicare & Medicaid Services (CMS) have developed specific guidelines for screening patients that are at high risk for lung cancer.

National Cancer Care Consortium (NCCN) risk factors

- 50 or more years of age
- 20 or more pack years of smoking and has quit within the past 15 years
- Current smoker
- Asymptomatic

Centers for Medicare and Medicaid Services (CMS) risk factors

- 55 or more years of age
- 30 or more pack years of smoking and has quit within the past 15 years
- Current smoker
- Asymptomatic

OSF HealthCare has determined that patients meeting either set of guidelines will qualify for the Low-Dose Lung Screening Program, which uses a low-dose Computed Tomography.

Education to the OSF providers was completed June – August and the new resources and tools went into effect in September. We experienced an increase in the number of lung cancer screenings that started in September and has remained high since.

LUNG CANCER SCREENING TEST

LOW-DOSE CT
(COMPUTED TOMOGRAPHIC) SCAN

MONTH	SCREENINGS
APRIL	30
MAY	17
JUNE	15
JULY	31
AUGUST	38
SEPTEMBER	47
OCTOBER	72
NOVEMBER	72
TOTAL (APR-NOV)	322

Community events

We partner with many community organizations, including OSF Parish RNs, local churches, the American Cancer Society, the Jeremiah Project, the University of Illinois (Rockford College of Medicine grant program on lung cancer and screening research) and so many more. Below are some of the community events that we have participated in this past year.

Pasqua Mercato

Our cancer center team participated often in Rockford's Italian Market held on Sundays throughout the summer at Lino's Restaurant to offer information on cancer prevention, screening and our other cancer programs.

Cancer Survivorship Event

Over 200 gift bags were handed out on June 7, 2021 as we offered an appreciation gift and cancer resources to celebrate cancer survivors and raise awareness on the challenges of cancer survivorship. Although COVID-19 changed the way we did things, we celebrated our patients who were surviving! Meet and greet sessions were offered by our experts on palliative care, high risk cancer genetics, financial navigation, after treatment care, clinical trials, wellness programs, and side effect management.

Lifescape Senior Expo

On September 18 at Rock Valley College, we participated in a community

resource event held for older adults, caregivers and families. It was held outdoors and OSF was there to provide information on cancer risk, prevention and screening. It was estimated that 700-1,000 people attended the event.

LOVE Rockford Event

The Jeremiah Development holds this event annually, but they had to cancel in 2020 due to the pandemic. It was held in 2021 on September 25, and they incorporated specific measures to prevent the spread of COVID-19, which included holding the event outdoors. It was a four-hour event that offered a chance for individuals, faith communities, health care providers and businesses to make a difference in the lives of struggling residents. There were 268 heads of household registered at LOVE Rockford, with a total of 306 people registered to be in attendance. OSF was proud to help fund this event, and the cancer center was there to provide information about quitting smoking (Illinois Quit Line), lung cancer screening and vaping dangers.

Great American Smokeout

Our lung cancer navigator participated in this important event that is held every year on the third Thursday in November. She provided information about quitting smoking (Illinois Quit Line), lung cancer screening and vaping dangers to 67 people.

Making Strides

This American Cancer Society (ACS) event is held annually and is committed to raising awareness to help prevent breast cancer and fund research and resources. This year's event was held on Saturday, October 9, 2021, at Rock Valley College. There were 66 teams in attendance and over 800 walkers on site. Per ACS, \$48,000 was the goal and over \$98,000 was raised!



Community partnerships and support in 2021



We are extremely grateful for the support of our community partners such as the American Cancer Society and many other organizations, businesses and individuals. A cancer diagnosis can be very challenging and the support of our community partners often helps patients meet the emotional and fiscal needs that result from their diagnosis and treatment. The following are only a few of our community supporters. We are so grateful to everyone who provides support to our patients and program.

Pink Heals

Pink Heals of Winnebago County brought an early Christmas to our cancer center October 19 when they surprised 15 cancer patients with gifts and hugs. Their presence was very uplifting for all patients, visitors and Mission Partners. The Pink Heals organization supports men, women and children of Winnebago County in their fight against cancer.



Cherry Valley Fire and Police Departments

Honoring two of their team members who were undergoing treatment, the Cherry Valley Fire and Police departments held a fundraiser to benefit the cancer center and positively impact our patient care.



Rocky's Bar & Grill

For the fourth year, this group has donated baskets of gifts to the Patricia D. Pepe Cancer Center. Their generosity is greatly appreciated by the center and our patients.

Community of Christ Church

Thank you to the Community of Christ Church members who donated bags of treats to our patients this year!

Women's Council of Realtors

We are ever grateful to this group of realtors that donated to our cancer center in honor of one of their members who recently lost her battle with cancer.

Volunteers

Our volunteers in the cancer center have always been an important part of our team, and when the pandemic hit in 2020 we wanted to keep them safe and restricted them from volunteering. In 2021 we had a limited return of our volunteers. Since our volunteers could not work with patients within the cancer center for so long we were blessed by two of our Healing Pathways volunteers who volunteered time in the memorial gardens. The gardens look wonderful! We saw so many more patients and staff enjoying the gardens as they flourished throughout the year! We are grateful!



With this ring

OSF CANCER PATIENT SAYS “I DO” IN HOSPITAL CEREMONY



“ I CAN’T EVEN DESCRIBE IT. I DIDN’T EXPECT ANYTHING LIKE THIS,” VICKI SAID. *“I’M SO THRILLED. I’M SO TICKLED. I’M SO HAPPY.”* ”

Vicki Smith met Mike Ethridge more than 30 years ago, and three decades later the bloom remains fresh for this Rockford couple. They’ve had their ups and downs, like most couples, but they’ve always supported each other through good times and bad, especially when Smith was diagnosed with cancer eight years ago. She fought through and won the battle. But recently, Smith got some upsetting news about her health.

“Just a couple of months ago it hit me again, stage four in the bone,” Vicki said. “But that’s OK. God is good. We’re going to fight it and stay positive. The doctors and everyone here are just wonderful. I couldn’t ask for better.”

Facing a difficult challenge, the couple decided it was time to get married. Recently hospitalized, Smith wanted to get married at the Patricia D. Pepe Center for Cancer Care at OSF HealthCare Saint Anthony Medical Center in front of OSF Mission Partners, many of whom she considers family.

The OSF team got busy. They created decorations, made a cake and even had sparkling grape juice on hand. On March 2, Smith was wheeled into the infusion area of the cancer center by hospital staff with “Here Comes the Bride” playing. The brief ceremony was conducted by a hospital chaplain.

Smith wasn’t the only one thrilled with her special day. The Mission Partners from the cancer center and hospital who made this day possible were deeply moved.

“It was an opportunity to do something nice for someone who has gone through a lot, who is a really sweet individual, a very caring individual,” said Dr. Iftekhar Ahmad, director of Oncology Services, OSF HealthCare Saint Anthony Medical Center.

“We’ve all gotten very close with her over the years.”

Recognition and Awards

Our program is strong because of the great team members who have been called to work in cancer care. We want to recognize them for all of their efforts during such challenging times. We have faced the pandemic together and are stronger for it. Many frontline workers and providers joined our team in 2021. We are proud of all of their accomplishments, successes and teamwork and want to share some of those times with you.



Rockford Chamber of Commerce Emerging Leader of the Year Award

We are so proud of our Medical Oncology/Infusion Manager, Julie Cline, RN, BSN, OCN, who was named this year's Rockford Chamber of Commerce Women-In-Business Awards Emerging Leader of the Year! This award honors a female professional in the early stages of her career who exhibits leadership skills, commitment to professional growth, and who contributes positively to her team and organization.



Pumpkin decorating contest

Throughout the month of October our team members decorated pumpkins, and the patients and family members voted on their favorites. There were more than 400 votes to determine the winners!



Awesome Mission Partner (AMP) awards

Our radiation dosimetry lead, Amy Seebach, won the September OSF AMP Award for being such a great team player.



I am an OSF Nurse awards

Kristin Talac, RN, BSN, OCN, won the Transformational Leadership I am an OSF Nurse Award, and Sister Mary Rose Thomas Weighner, RN, BSN, won the Innovator in Nursing I am an OSF Nurse Award. Cancer navigator Lisa Bruno, RN, BSN, OCN, CBN, and Karen Blatter, RN, BSN, OCN, CCRC, a cancer research coordinator also won I am an OSF Nurse awards! They both won for Exemplary Professional Practice.



We are SO grateful
for our wonderful staff!



Our dedicated oncology providers



Alyssa Ceilesh, DO
Medical oncology & hematology



Kent Hoskins, MD
Cancer genetics



Mete Korkmaz, MD
Medical oncology & hematology



Ismael Shaukat, MD
Medical oncology & hematology



Anne Celner, APRN
Medical oncology & hematology



Katie McGrail, PA
Medical oncology & hematology



Shylendra Sreenivasappa, MD
Medical oncology & hematology



Peggy Rogers, APRN
Oncology & genetics



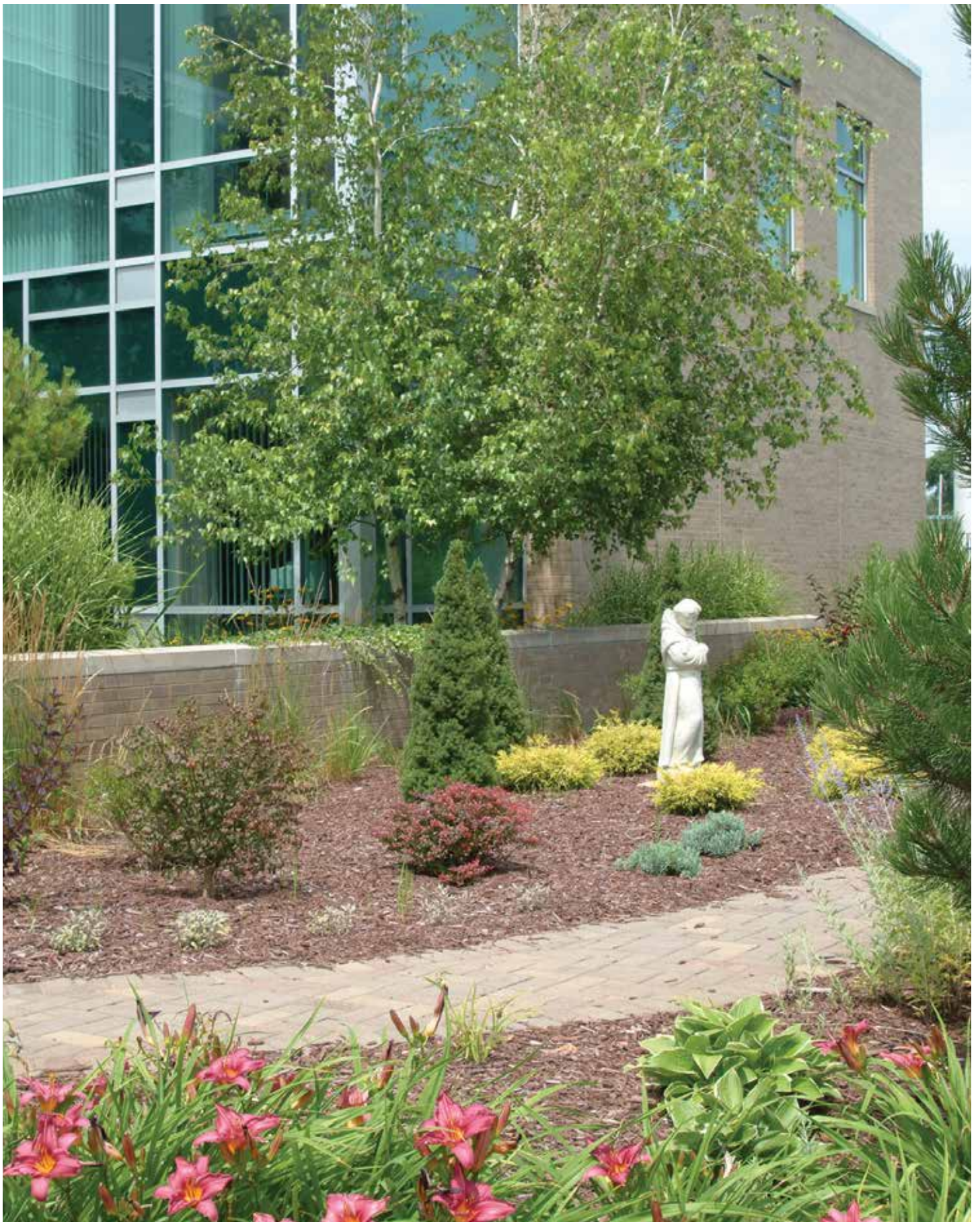
Iftekhhar Ahmad, MD
Radiation oncology



George Bryan, MD
Radiation oncology



Eileen O'Halloran, MD
Surgical oncology



2021 Cancer Committee

The Cancer Committee is a multidisciplinary group of physicians from various specialties, as well as representatives from departments and community partners that provide support and management of cancer care. This committee guides quality improvements and cancer-related policies and programs for the Patricia D. Pepe Center for Cancer Care at OSF HealthCare Saint Anthony Medical Center. We wish to express a special thank you to the Cancer Committee members for their dedicated leadership and tireless effort.

CANCER COMMITTEE CHAIR

Iftekhar Ahmad, MD, MS

CANCER LIAISON PHYSICIAN

Alyssa Ceilesh, DO

CANCER COMMITTEE COORDINATORS

Cancer Conference Coordinator
Quality Improvement Coordinator
Cancer Registry Quality Coordinator
Community Outreach Coordinator
Clinical Research Coordinator
Psychosocial Services Coordinator
Survivorship Program Coordinator

Tanya Magnuson, CTR
 Akta Patel, MS
 Lynn Kiehl, CTR
 Thelma Baker, MSN, RN, OCN, NEA-BC
 Karen Blatter, RN, BSN, OCN, CCRC
 Anne Celner, APRN
 Peggy Malone, RN, BS, OCN

CANCER COMMITTEE MEMBERS

American Cancer Society
Clinical Trials
Diagnostic Radiology
General Surgery
Genetics
Medical Oncology
Nutrition Services
Oncology Nurse
Palliative Care
Pathology
Patient Navigation
Psychosocial Services
Radiation Oncology
Rehabilitation Services
Women's Center

Emmanuel Zambrano, BS, MPA
 Shylendra Sreenivasappa, MD
 Stephen Lehnert, MD
 Eileen O'Halloran, MD
 Peggy Rogers, MSN, FNP-BC, AOCNP
 Mete Korkmaz, MD
 Ismael Shaukat, MD
 Patricia Bomkamp, RD
 Julie Cline, BSN, OCN
 Ryan Tresemer, BSN, OCN
 Trent Barnhart, MD
 Jean Kriz, MD
 Joseph Peevey, MD
 Lisa Bruno, RN, BSN, OCN
 Karen Gessner, MSW
 George Bryan, MD
 Barbara Gutierrez, PT
 Lisa Timpe-Johnson, PT
 Allison Gleason, R.T. (R) (M)

Our cancer report is prepared annually and is dedicated to our patients and their families who continue to inspire us with their courage.

For more information about cancer services and programs, or to refer a patient to the Patricia D. Pepe Center for Cancer Care at OSF HealthCare Saint Anthony Medical Center, call (815) 227-2273 or visit osfsaintanthony.org

References

- American College of Surgeons. 2021. *Commission on Cancer: Improving outcomes for patients with cancer*. <https://www.facs.org/quality-programs/cancer/coc>
- American College of Surgeons. 2021. *National Cancer Database*. <https://www.facs.org/quality-programs/cancer/ncdb>
- American Society of Clinical Oncology and Association for Clinical Oncology. 2021. *Quality Oncology Practice Initiative*. <https://practice.asco.org/quality-improvement/quality-programs/qopi-certification-program>

A special thank you to the Cancer Committee members for their dedicated leadership and tireless effort.

Patricia D. Pepe Center
for Cancer Care
ACCREDITATIONS



QOPI[®] Certified

Quality Cancer Care: Recognizing Excellence



A **QUALITY PROGRAM**
OF THE AMERICAN
COLLEGE OF SURGEONS





OSF[®]
HEALTHCARE

OSF HealthCare Saint Anthony Medical Center
5666 E. State St., Rockford, Illinois • osfsaintanthony.org