

INFO TO KNOW

The Newsletter of the OSF Saint Francis Medical Center Library and Resource Center

First Quarter 2017

The library is currently revamping its website:

<http://www.osflibrary.org/>

We'd love your input. Let us know what you think of the current website, and how we can improve it. You can use our contact form to let us know what you think, or email the library manager, Melissa Hudak. Thank you!

<https://www.osflibrary.org/form/general-contact/>



DATABASE HIGHLIGHT: VisualDX

What is VisualDX? It is a diagnostic clinical decision support system. It is designed to improve diagnostic accuracy and patient care. You can access it on any OSF computer here: <https://www.visualdx.com/visualdx>

Quick Start for New Users



SMART SEARCH

Search by chief complaint, medication, or travel location to start building a custom differential. Or simply search a specific diagnosis to go straight to clinical information, images, and Sympticons™.



BUILD A DIFFERENTIAL

"Quick Start Differential" to be guided through building a custom differential for your patient.

DIFFERENTIAL RESULTS

Optimize your view of differential results - change from photos to Sympticons to list view.

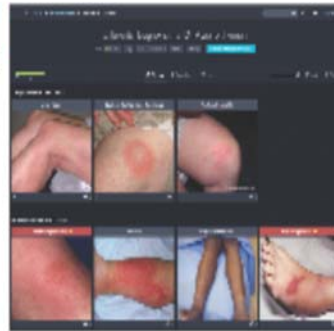


Photo View



Sympticon View



List View

Differential Builder Features

CHIEF COMPLAINT

The chief complaint, entered in the search bar on the VisualDX homepage, is the main symptom that brings your patient to see you.

DDX STRENGTH INDICATOR

As you enter patient findings, use the DDX Strength Indicator to gauge the strength of your differential results.



ENTER FINDINGS

The differential builder questions are tailored for each chief complaint. For example, "rash" will bring up questions about lesions, while "vomiting" will bring up questions about vitals and a patient's physical exam. Select the appropriate symptoms experienced by your patient.



PATIENT INFO

Specify patient age and gender to ensure that diagnoses are tailored to your patient.

EDIT FINDINGS

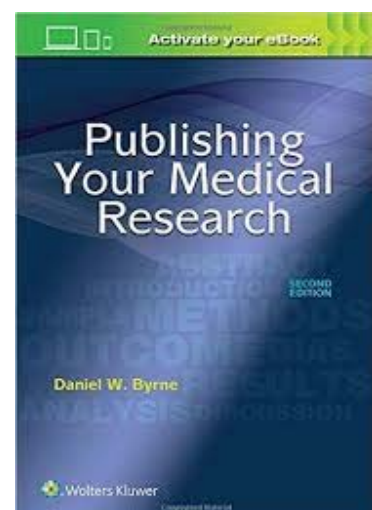
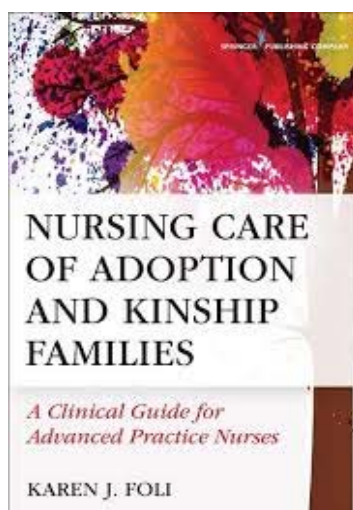
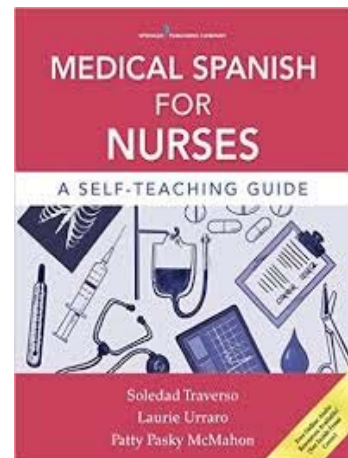
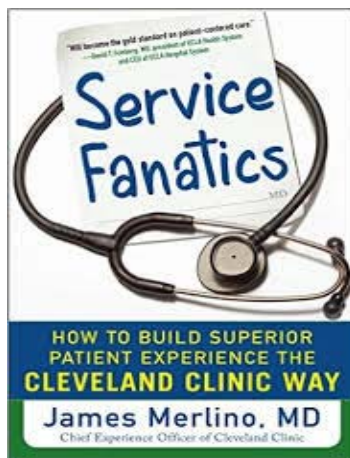
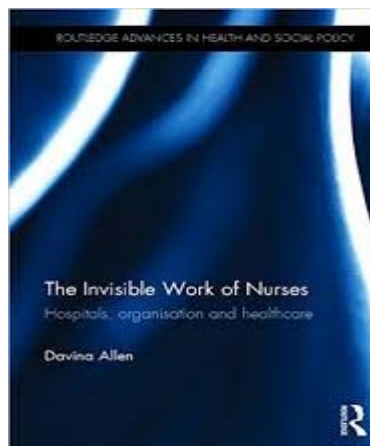
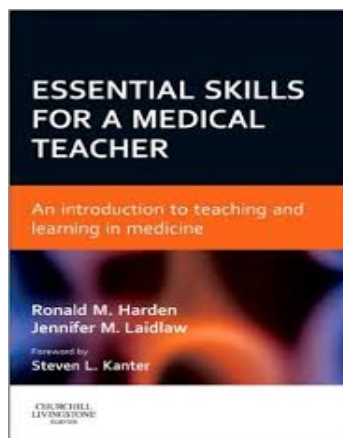
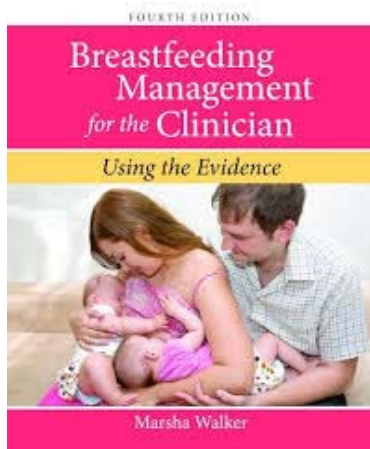
As you enter a patient's symptoms (or findings), they appear here. To make a finding required in your differential results, click the circle on the left to make it turn green. To remove a finding, click the "x" on the right.

New Books!

If you want to see any of these books, let us know!

If you want the library to purchase a book to support practice or education at OSF, let us know!

<https://www.osflibrary.org/form/request-book/>



Contact Us

The main library number is (309) 655-2210.

You can also call:

(309) 624-9946 - To ask for a book

(309) 655-4784 - To ask for journal articles

(309) 655-2269 - To ask for a literature search

(309) 655-3405 - To ask about training

PLACE
STAMP
HERE