



CHEMPACK

WHAT IS CHEMPACK?

- A part of the Illinois Department of Public Health, Office of Preparedness and Response, Medical Countermeasures (MCM) Program.
- CHEMPACK is a Federal (National) initiative to ensure antidotes are rapidly available to state and local emergency responders to enhance their capability to respond quickly to a large-scale nerve agent exposure.
- The mission of the program is to forward place a sustainable resource of nerve agent antidotes throughout the United States to expedite delivery of additional antidotes to locations that require them in the event of an emergency.
- In Illinois this forward placement occurs at hospitals.

WHAT IS CHEMPACK?

- 2 types of CHEMPACK Containers: EMS and Hospital
- EMS containers are designed for treatment by emergency responders-
 - antidotes are packaged in single use IM auto-injectors.
 - A percentage of the doses are designed for pediatric patients.
 - Intended for 454 casualties
- Hospitals containers packaged antidotes are in IV multi-dose vials to allow for dosage adjustments.
 - Medicines used in the emergency room
 - 85% packaged in multi- dose vials for Ivs
 - Intended for 1000 casualties

CHEMPACK CONTAINER CONTENTS

Product	Unit Pack	Cases per EMS Container	Cases per Hospital Container
Mark 1 Auto- injector	240	5	2
Atropine Sulfate 0.4 mg/ml 20 ml	100	1	9
Pralidoxime 1 mg inj. 20 ml	276	1	10
Atropen 0.5 mg	144	1	1
Atropen 1.0 mg	144	1	1
Diazepam 5 mg/ml, auto- injector	150	2	1
Diazepam 5 mg/ml, 10 ml	50	1	13
Sterile Water for Injection, 20 cc Vials	100	2	28
Approximate Treatment Capacity (depending on the severity of the event		454	1000

CHEMPACK PLAN ROLES

- CDC
 - Owns assets.
 - Provides guidance to manage program.
 - Evaluates and approves site locations.
 - Monitors sites 24/7.
 - Conducts periodic inspections.
 - Administers Shelf Life Extension Program (SLEP) through the DOD/FDA.
- IDPH
 - Coordinates distribution of assets throughout state.
 - Oversees receipt, storage, maintenance, monitoring, reporting, and activation.
 - Schedules CDC site visits with cache sites, in conjunction with REMSCs.
 - Maintains/updates the Plan.
 - Ensures availability of annual training.

ILLINOIS DPH ROLES AND RESPONSIBILITIES

- Overall management of the Illinois CHEMPACK Program through IDPH MCM Program
- Coordination with RHCC Coordinators for optimal geographic coverage
- Oversight of receipt, storage, maintenance, monitoring, reporting, activation of assets
- Coordination of / participation in CDC site visits
- Coordination of temporary positioning of assets
- Coordination of permanent relocation
- Execution of annual review of CHEMPACK Plan
- Assurance of annual training and evaluation requirements

CHEMPACK PLAN ROLES

- **CACHE SITES**
 - Provide secure and controlled environment for storage.
 - Maintain protocols for distributing assets when local resources are gone.
 - Maintain current contact list in CEMP.
 - Ensure annual training for appropriate hospital staff.
- **HOSPITALS**
 - Maintain protocols for requesting assets from regional cache sites.
 - Maintain current contact list.
 - Ensure annual training for appropriate hospital staff.

CHEMPACK PLAN ROLES

- EMS
 - Maintain protocols for requesting assets from regional cache sites.
 - Maintain current contact list.
 - Request CHEMPACK assets as necessary during an emergency based on protocol.
 - Administer CHEMPACK assets in the field according to treatment protocols.
 - Ensure annual program and clinical training for appropriate
- LOCAL POLICE
 - Maintain protocols for transporting assets from regional cache sites.
 - Transport assets from cache site to the site of the incident or from cache site to a hospital.
 - Complete appropriate paperwork, including Transfer of Custody Form.
 - Participate in local training/drills as requested.

ACTIVATION OF CHEMPACK

- CHEMPACK assets are activated when:
 - local supplies will be exhausted quickly .
 - more than 50 people are affected .
 - the health of the community is threatened.

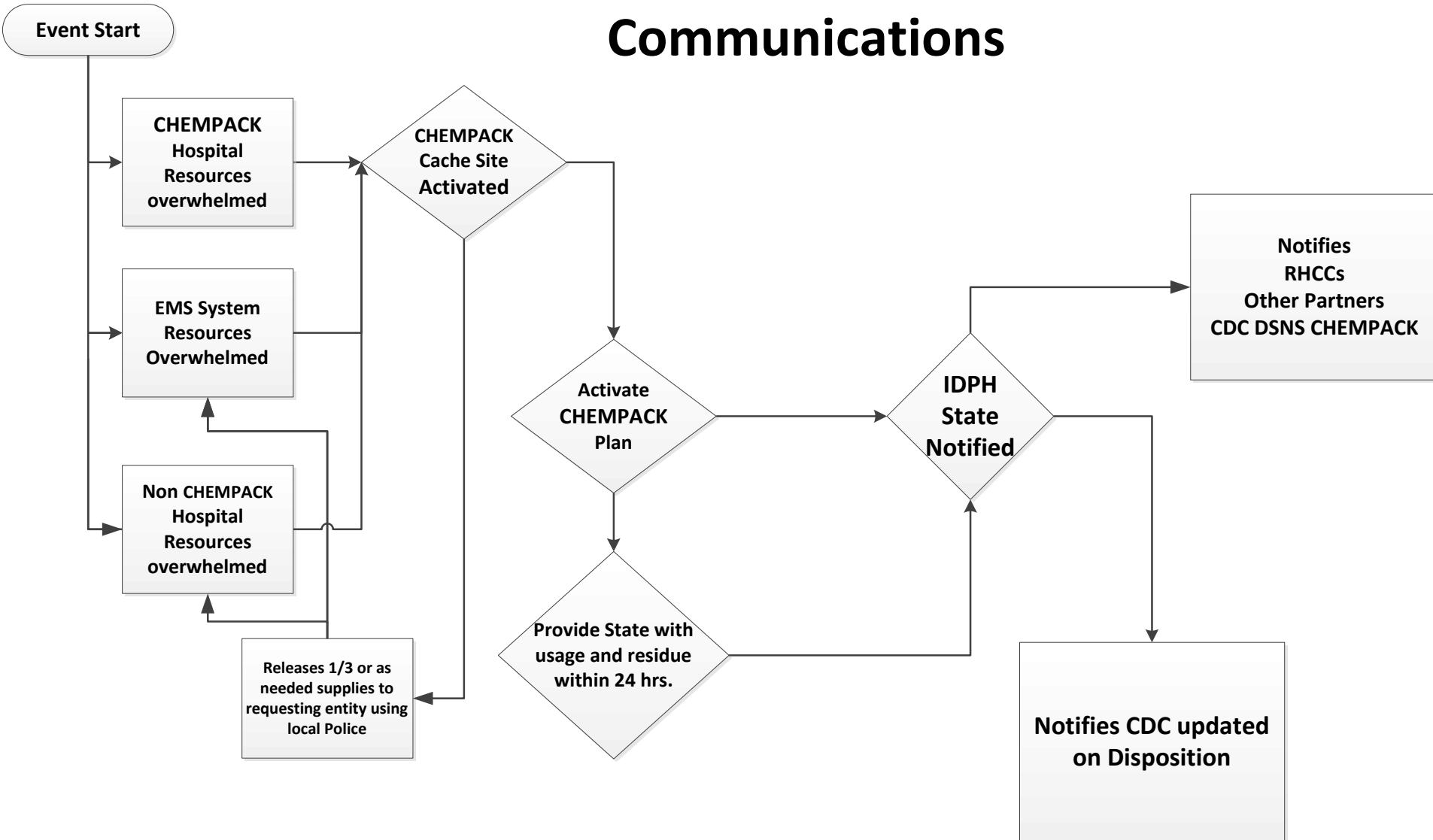
 - Determination made by EMS in the field and/or a hospital.

 - Cache sites notifies the IDPH Duty Officer via the IEMA Communications Center.
- Based on protocol for requesting, transferring and transporting assets.

 - Requires involvement of authorized, trained personnel at local level.

 - Depends on specific flow of communication at all levels.

CHEMPACK Communications



NOTE!

Supplies removed from CHEMPACK Container can not be returned to Container.

CHEMPACK DISTRIBUTION

26	Chem-Pack Hospital	St. Francis-Peoria	530 North East Glen Oak Avenue, Peoria 61637; Phone: 309-655-2000
	Hospital	Galesburg Cottage	695 North Kellogg Street, Galesburg; Phone: 309-343-8131
	Hospital	St. Mary's	3333 North Seminary Street, Galesburg; Phone: 309-344-3161
	Hospital	Methodist	221 Northeast Glen Oak, Peoria; Phone: 309-672-5522
	Hospital	Proctor	5409 North Knoxville Avenue, Peoria; Phone: 309-691-1000
	Hospital	Hopedale	107 Tremont, Hopedale; Phone: 309-449-3321
	Hospital	Pekin	600 South 13th Street, Pekin; Phone: 309-347-1151
	Hospital	Eureka	101 South Major Street, Eureka; Phone: 309-467-2371
	EMS	EMS Systems 242 and 243	Galesburg; Phone: 309-345-4565
	EMS	EMS System 218	Peoria; Phone: 309-655-3756
	EMS	EMS System 279	Peoria; Phone: 309 691 1069
	Law Enforcement	Peoria Police Department	600 Southwest Adams Street, Peoria 61602; Dispatch #: 309-494-8000
29	Chem-Pack Hospital	Trinity-Rock Island	500 John Deere Road, Moline 61265; Phone: 309-779-5000
	Hospital	Perry	530 Park Avenue East, Princeton; Phone: 815-876-4411
	Hospital	St. Margarets	600 East First Street, Spring Valley; Phone: 815-664-5311
	Hospital	Hammond-Henry	600 North College Avenue, Geneseo; Phone: 309-944-5650
	Hospital	Kewanee	719 Elliott Street, Kewanee; Phone: 309-932-3423
	Hospital	Mercer	409 North West 9th Avenue, Aledo; Phone: 309-582-5301
	Hospital	Trinity	500 John Deere Road, Moline; Phone: 309-779-5000
	Hospital	Illini	801 Hospital Road, Silvis; Phone: 309-792-9363
	EMS	EMS System 240	Kewanee; Phone: 309-923-3423
	EMS	EMS System 215	Rock Island; Phone: 309-779-7760
	EMS	EMS System 253	Silvis; Phone: 309-792-7050
	Law Enforcement	Rock Island Police Department	316 South 16th Street, Rock Island 61201; Dispatch #: 309-786-5911
19	Chem-Pack Hospital	McDonough-Macomb	525 East Grant Street, Macomb 61455; Phone: 309-833-4101
	Hospital	Graham	210 West Walnut, Canton; Phone: 309-647-5240
	Hospital	OSF Holy Family Medical Center	1000 West Harlem Avenue, Monmouth; Phone: 309-734-3141
	EMS	EMS System 219	Macomb; Phone: 309-833-4101
	Law Enforcement	Macomb Police Department	120 South McArthur Street, Macomb 61455; Dispatch #: 309-833-4505
4	Chem-Pack Hospital	St. Joseph's Medical Center-Bloomington	2200 East Washington Street, Bloomington 61701; Phone: 309-662-3311
	Hospital	Mendota	1315 Memorial Drive, Mendota; Phone: 815-539-7461
	Hospital	Ottawa	1100 East Norris Drive, Ottawa; Phone: 815-433-3100
	Hospital	Illinois Valley	925 West Street, Peru; Phone: 815-780-3300
	Hospital	St. Mary's	111 East Spring Street, Streator; Phone: 815-673-2311
	Hospital	St. James	610 Water Street, Pontiac; Phone: 815-842-2828
	Hospital	Bromenn	Virginia at Franklin, Normal; Phone: 309-662-8772
	EMS	EMS System 256	Ottawa; Phone: 815-433-3100
	EMS	EMS System 254	Peru; Phone: 815-780-3114
	EMS	EMS System 245	Streator; Phone: 815-673-4557
	EMS	EMS System 257	Pontiac; Phone: 815-842-2828
	EMS	EMS System 237	Bloomington; Phone: 309-827-4348
	EMS	EMS System 238	EMS Systems 237 and 238 merged, See above
	Law Enforcement	Bloomington Police Department	305 South East, Bloomington 61702; Dispatch #: 309-827-8800



THANK YOU

GREG ATTEBERRY
REGIONAL EMS COORDINATOR, EDWARDSVILLE